

evolution : filling and topping up the automatic gearbox oil (type 4HP20) INJECTION ES9J4 AND HP20 (AG) SINCE RPO No. 08206

1 Vehicle concerned

Vehicle with automatic gearbox (type 4HP20).

Applicable from gearbox number 20H2XX (from RPO No. 8206).

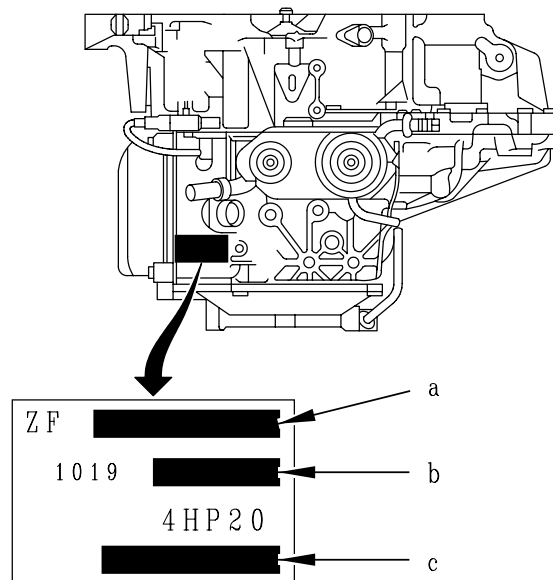
1.1 Evolution

Discontinuation of the manual dipstick on the automatic gearbox.

(instead of 80 °C).

Gearbox filled with oil through the air vent.

1.2 Identification



- Fig. : 1 -

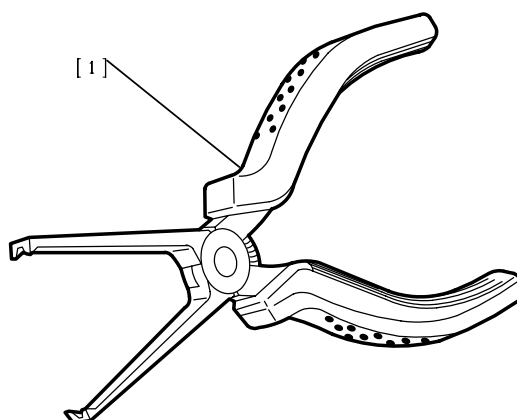
" a " the serial number.

" b " ZF identification number.

" c " component number.

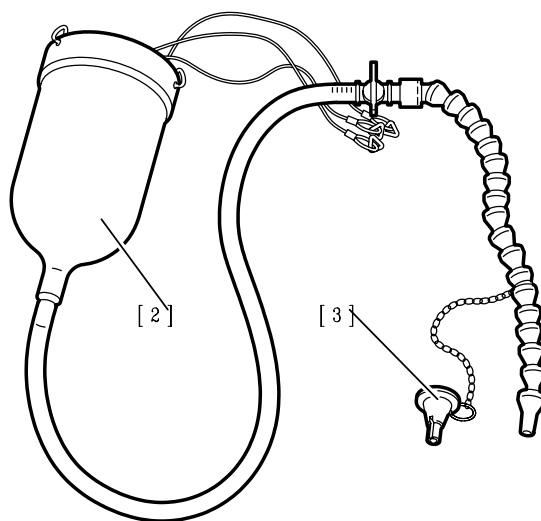
2 Refilling - top-up

2.1 Recommended tools



- Fig. : 2 -

[1] hose clip pliers 4517-T (tool box 4507-T).



- Fig. : 3 -

[2] topping up cylinder (-).0341.

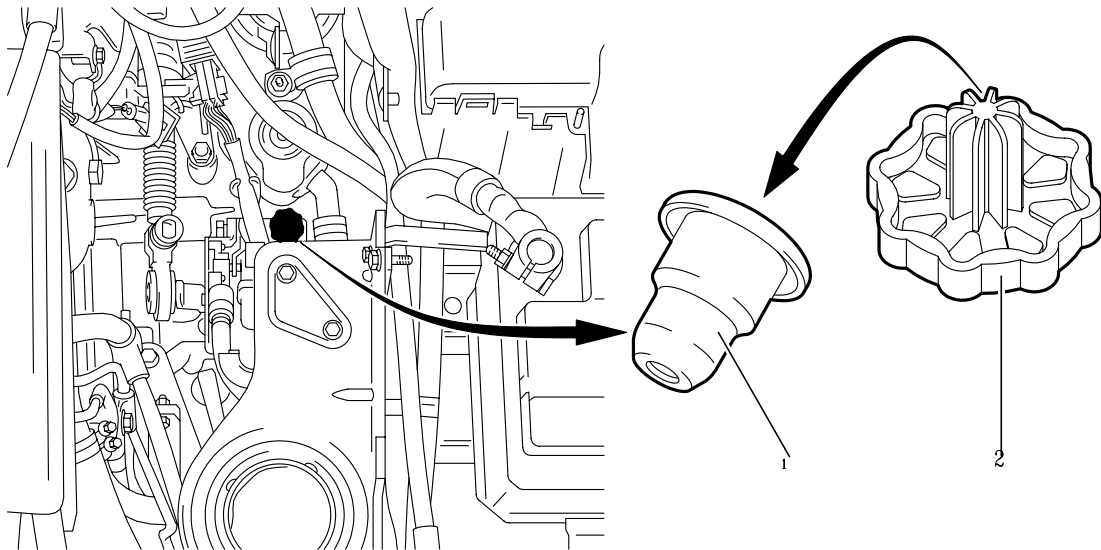
[3] specific end piece (-).0341.B.

2.2 Refilling

The oil capacities are still the same

:

- oil capacity of a new gearbox :
7,7 litres (minimum) ,
8,3 litres (max.)
- oil remaining after draining :
4,7 litres (minimum) ,
5,3 litres (max.)
- quantity of oil to be added after draining : about 3 litres

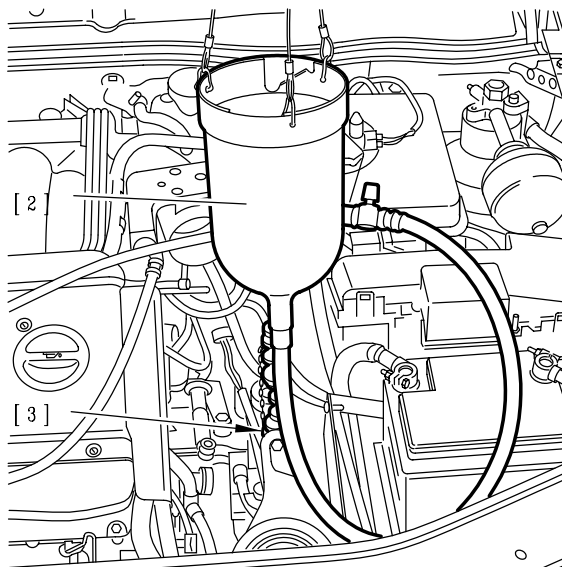


- Fig. : 4 -

Remove

:

- the air filter housing
- the air vent assembly (1) and (2) of the gearbox using tool [1]



- Fig. : 5 -

The gearbox is filled with oil using tools [2] and [3].

Refit the metal part (1) of the air vent using a Ø 18 mm drift and a hammer.

Clip the plastic part (2) onto the air vent.

N.B. : All the gearbox air vent parts are available from the Replacement Parts Division.

2.3 Oil level check

2.3.1 Prior conditions

The vehicle is on a flat surface ,
handbrake off.

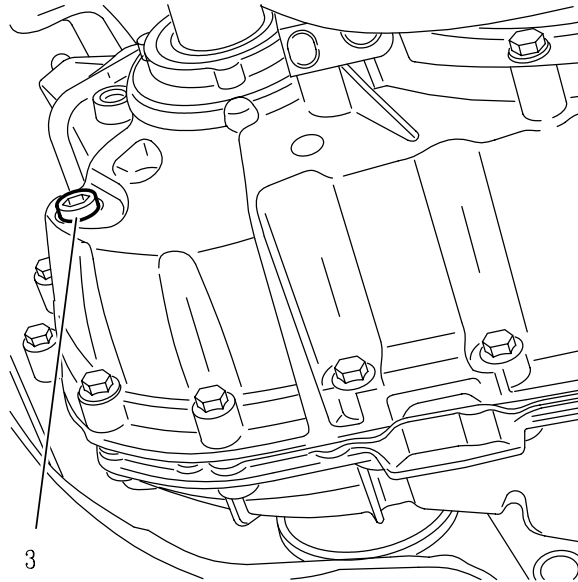
Engine idling, without consumers (air conditioning, heating, etc).

Check that the gearbox is not in a back-up mode using a diagnostic tool.

Apply the brakes firmly and move the lever through the various selector positions.

Lever in position P.

The check is performed when the oil has reached a temperature of $55^{\circ}\text{C} \pm 1^{\circ}\text{C}$ using a diagnostic tool.



- Fig. : 6 -

Remove the oil level plug (3).

2.3.2 Oil flowing out through the oil level orifice

When the oil temperature reaches $60^{\circ}\text{C} \pm 1^{\circ}\text{C}$, replace the filler plug (3).

N.B. : The oil level is correct.

Tighten the cap (3) to 2,5 m.daN.

2.3.3 Oil not flowing out through the oil level orifice

Refit the oil level plug (3).

Stop the engine.

Remove the air vent assembly (1) and (2) from the gearbox using tool [1].

Add 0,5 litre of oil to the gearbox using tool [2].

Repeat the topping up procedure.

Remove tools [2] and [3].

Refit the metal part (1) of the air vent using a $\varnothing 18$ mm drift and a hammer.

Clip the plastic part (2) onto the air vent.

Refit the air filter housing.

N.B. : The method for topping up the oil of a gearbox with a manual dipstick remains the same.